

# Keysight Infiniium 9000 Series Oscilloscopes

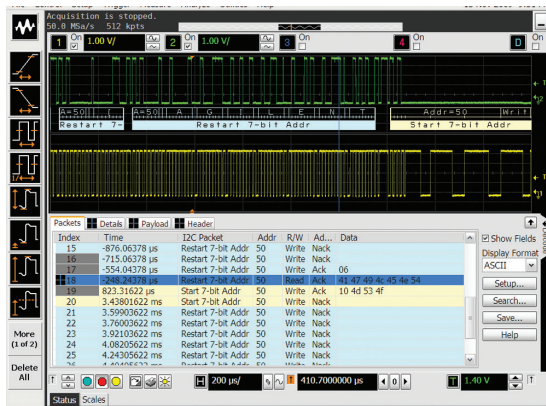
Engineered for broadest measurement capability



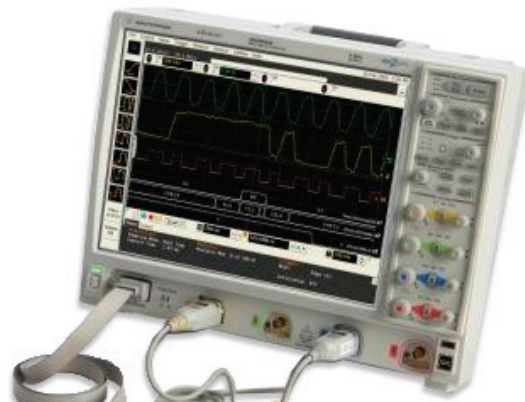
What makes the Infiniium 9000 Series the go-to scope for a complete range of test and debug challenges?

### Three instruments in one

- **Oscilloscope:** Fast sample and update rates let you see a precise representation of your signal. Scope is packed with features and analysis capabilities.
- **Logic analyzer:** Fast, deep-memory digital channels show critical data values and timing relationships.
- **Protocol analyzer:** Leading-edge scope-based protocol viewer with multi-tab viewing so you can quickly move between protocol and physical layers.
- **Widest range of application-specific software** for debug, analysis and compliance testing
- **Sized to fit your environment** with the largest display (15"), a smaller depth (9") and lighter weight (26 lbs) than any other scope in its class.



Extend your scope capability with protocol analysis. The tracking marker/bar shows precise time alignment between protocol viewer and analog waveforms.



Integrated mixed-signal oscilloscope lets you trigger across time-correlated analog and digital channel combinations.

### Key specifications

|             |  |
|-------------|--|
| Bandwidth   | 600 MHz, 1 GHz, 2.5 GHz and 4 GHz models   |
| Channels    | 4-ch, and 4-ch + 16 digital channels models  |
| Sample rate | 10 GSa/s (20 GSa/s on 2-ch) (600 MHz is 5 GSa/s on 4-ch and 10 GSa/s on 2-ch)  |
| Memory      | 20 Mpts standard (40 Mpts on 2-ch)   |
| Display     | 15" high-definition display with XGA resolution  |
| Triggering  | Edge, glitch, runt, timeout, pattern/ pulse range, state, pulse width line, window, setup and hold, video and serial |

### See your signals in HD

Also consider the 9000 H-Series high-definition oscilloscopes for precision signal viewing. They provide low noise and high-dynamic-range measurement capability with up to 12 bits of resolution.

Order the mixed-signal oscilloscope (MSO) to add 16 digital timing channels to any scope

## Oscilloscope models

| Model    | Bandwidth | Sample rate <sup>1</sup> | Memory depth <sup>1</sup> | Scope channels |
|----------|-----------|--------------------------|---------------------------|----------------|
| DSO9064A | 600 MHz   | 5 GSa/s                  | 20 Mpts                   | 4              |
| MSO9064A | 600 MHz   | 5 GSa/s                  | 20 Mpts                   | 4 + 16 digital |
| DSO9104A | 1 GHz     | 10 GSa/s                 | 20 Mpts                   | 4              |
| MSO9104A | 1 GHz     | 10 GSa/s                 | 20 Mpts                   | 4 + 16 digital |
| DSO9254A | 2.5 GHz   | 10 GSa/s                 | 20 Mpts                   | 4              |
| MSO9254A | 2.5 GHz   | 10 GSa/s                 | 20 Mpts                   | 4 + 16 digital |
| DSO9404A | 4 GHz     | 10 GSa/s                 | 20 Mpts                   | 4              |
| MSO9404A | 4 GHz     | 10 GSa/s                 | 20 Mpts                   | 4 + 16 digital |

1. In 2 ch mode, sample rate and memory depth double.

## Options and accessories

| Model      | Description  |
|------------|--|
| N2900A-050 | Upgrade to 50 Mpts of memory   |
| N2900A-100 | Upgrade to 100 Mpts of memory  |
| N2900A-200 | Upgrade to 200 Mpts of memory  |
| N2900A-500 | Upgrade to 500 Mpts of memory  |
| N2901D     | DSO9064A to MSO9064A upgrade kit   |
| N2901A     | DSO9104A to MSO9104A upgrade kit   |
| N2901B     | DSO9254A to MSO9254A upgrade kit   |
| N2901C     | DSO9404A to MSO9404A upgrade kit   |
| N5473A     | External DVD-RW with USB connection  |
| N2902A     | 9000 Series oscilloscope rackmount kit   |
| N2745A     | Additional removable hard disk drive (requires option 801 at time of purchase) |
| N4865A     | GPIO to LAN adapter  |
| N2918B     | Infiniium Evaluation Kit   |

For a complete listing of available Keysight probes, see the Keysight Probes and Accessories Selection Guide, publication number 5989-6162EN.



### Keysight Assurance Plans

[www.keysight.com/find/AssurancePlans](http://www.keysight.com/find/AssurancePlans)

Up to ten years of protection and no budgetary surprises to ensure your instruments are operating to specification, so you can rely on accurate measurements.

## Recommended probes

| Model     | Key characteristics  |
|-----------|--|
| N2783B    | 500-MHz passive probes (standard)  |
| 1130A     | 1.5 GHz InfiniiMax probe (optional)  |
| 1131A     | 3.5 GHz InfiniiMax probe (optional)  |
| N2795/96A | 1 and 2 GHz active probes (optional)   |
| N7040A    | AC current probe 23 MHz, 3 kA  |
| N7041A    | AC current probe 30 MHz, 600 A   |
| N7042A    | AC current probe 30 MHz, 300 A   |
| N7026A    | AC/DC high sensitivity clamp-on current probe 150 MHz, 40 Apk with AutoProbe |

## Applications

| Model  | Description                                |
|--------|--|
| N5462B | RS-232/UART triggering and decode          |
| E2681A | EZJIT jitter analysis software             |
| N5384A | High-speed SDA and clock recovery          |
| N5400A | EZJIT Plus jitter analysis software        |
| N5464B | USB triggering and decode                  |
| N5463B | PCI Express 1.1 triggering and decode      |
| N5391B | I <sup>2</sup> C/SPI triggering and decode |
| N8803B | CAN/LIN/FlexRay triggering and decode      |
| N5415B | InfiniiScan                                |
| N5430A | User-defined function (MATLAB integration) |
| U1882A | Power measurement application software     |
| N5397A | Xilinx FPGA dynamic probe application      |
| N5392A | Ethernet compliance application            |
| N5416A | USB 2.0 compliance application             |
| U7233A | DDR1 validation application                |
| N5413B | DDR2 validation application                |
| N5467A | User-definable application                 |
| N8802A | MIPI D-PHY trigger and decode              |
| U7238A | MIPI D-PHY compliance                      |
| N8817A | JTAG triggering and decode                 |
| N2808A | Precision probe                            |
| N8900A | InfiniiView oscilloscope analysis software |