

FTB-1 Platform

EMPOWERING FRONTLINE TECHNICIANS



The FTB-1 Platform is a modular platform optimized for fast, powerful, dedicated FTTH and Ethernet test applications

KEY FEATURES

Flexible connectivity: USB, mobile, Wi-Fi and Bluetooth capabilities

Utilities: supports third-party applications and all the tools that enable technicians to complete their work right in the field

Test management/reporting: lets you take advantage of the EXFO Connect environment to monitor field operations (local and remote)

PC-oriented: Intel ATOM processor with Windows Embedded Standard operating system, for optimized productivity and versatility

Power management: latest battery technology for unmatched operation autonomy

SPEC SHEET



Assessing
Next-Gen Networks

MAXIMUM CONNECTIVITY FOR MAXIMUM FIELD-TESTING EFFICIENCY



The result of EXFO's time-proven expertise in portable platform design, the FTB-1 Platform is an open testing solution for network infrastructure construction and troubleshooting. The FTB-1's built-in intelligence empowers frontline technicians to take field-testing efficiency to the next level.

Thanks to a highly "connected" set of tools—including Update Manager and compatibility with the EXFO Connect environment, which provides end-to-end operational visibility and centralized reporting capabilities throughout the entire test instrument pool—the FTB-1 delivers maximum return on your investment.

ADAPTED FOR DEDICATED APPLICATIONS. DEDICATED TO HELPING YOU ADAPT.

Thanks to its small format, ultra-powerful processing and highly intuitive interface, the FTB-1 is optimized to allow field technicians to carry out dedicated FTTH and Ethernet test applications simply and efficiently. Yet, its multiple connectivity possibilities and automated update capabilities ensure that users can test, process results and report them wherever, whenever, while resting assured that their platform is running the latest software version available.

APPLICATIONS AND MODULES

LAN/WAN

Module: FTB-720
LAN/WAN Access OTDR

Access network testing

On the strength of best-in-class specifications and four test wavelengths, the FTB-720 LAN/WAN Access OTDR is optimized for fiber-optic contractors and private network operators, enabling them to fully test and qualify any type of fiber network.

FTTH

Module: FTB-730 PON
FTTx/MDU OTDR

FTTH testing

With a dynamic range of up to 39 dB and enabling power meter and visual fault locator functionalities, the FTB-730 PON FTTx/MDU OTDR module allows fiber installers to seamlessly characterize splitters in PON FTTx and multiple dwelling unit (MDU) applications.

Ethernet

Module: FTB-860
NetBlazer Ethernet Tester

Ethernet testing up to 10G

Offering comprehensive, yet simple test suites, the FTB-860 NetBlazer Ethernet Tester enables field technicians to quickly and easily turn up, validate and troubleshoot Ethernet services, with full EtherSAM capabilities, from 10 Mbit/s to 10 Gbit/s.

Fiber Inspection

Software: ConnectorMax
Analyzer

Connector endface analysis

Providing lightning-fast results in the first step of fiber-link testing, ConnectorMax is the industry's first platform-based, automated inspection application; it delivers fast pass/fail assessment of connector endfaces and is specifically designed to save both time and money in the field.

FEATURES

USB, mobile, Wi-Fi and Bluetooth connectivity capabilities

Supports third-party applications and all the tools that enable technicians to complete their work right in the field

Lets you take advantage of the EXFO Connect environment to manage field testing/reporting operations as well as your platform pool

Intel ATOM processor with Windows Embedded Standard operating system, for optimized productivity and versatility

Latest battery technology for unmatched operation autonomy

One GigE port and two USB 2.0 ports

Windows Remote Assistance and Remote Control

EXFO fiber inspection probe connector interface

Display: TFT outdoor-enhanced LCD, 7-inch touchscreen

Telcordia-compliant

SOFTWARE TEST TOOLS

This series of platform-based software testing tools enhance the value of the FTB-1 Platform, providing additional testing capabilities without the need for additional modules or units.

EXpert TEST TOOLS

EXpert VoIP TEST TOOLS

EXpert VoIP generates a voice-over-IP call directly from the test platform to validate performance during service turn-up and troubleshooting.

- Supports a wide range of signaling protocols, including SIP, SCCP, H.248/Megaco and H.323
- Supports MOS and R-factor quality metrics
- Simplifies testing with configurable pass/fail thresholds and RTP metrics

EXpert IP TEST TOOLS

EXpert IP integrates six commonly used datacom test tools into one platform-based application to ensure that field technicians are prepared for a wide range of testing needs.

- Rapidly performs debugging sequences with VLAN scan and LAN discovery
- Validates end-to-end ping and traceroute
- Verifies FTP performance and HTTP availability

THIRD-PARTY TEST TOOLS

Wireshark

This live-network packet capture utility makes it possible to look "inside" the packets and obtain data such as transmission time, source, destination, protocol type, etc. Users can then diagnose a problem or root out suspicious behavior. Wireshark is a standard utility on all FTB-1 platforms.

JPerf

This TCP performance testing tool can create TCP and UDP data streams, which measure the throughput of a network that is carrying them. Thanks to various user-definable parameters, technicians can rely on JPerf to optimize or tune a network under test.

Network Stumbler

Network Stumbler verifies wireless network configurations, enabling field technicians to identify areas that have poor coverage or wireless interference, and helping them to aim antennas for full effect and find unauthorized access points.

SOFTWARE UTILITIES

Update Manager

Ensure that your entire fleet of platforms is up-to-date with the latest software, and easily manage your maintenance contracts.

VNC configuration

The Virtual Network Computing utility allows technicians to easily communicate settings to remote colleagues.

Microsoft Internet Explorer

Access the Web directly from your platform interface.

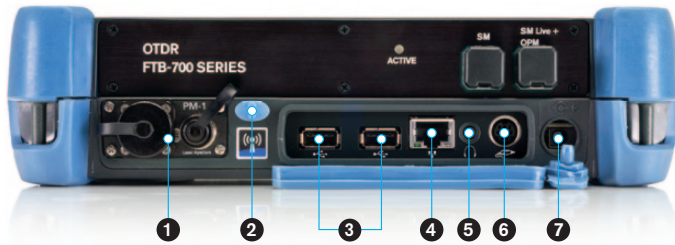
Bluetooth file sharing

Share files from your FTB-1 to any Bluetooth-enabled device.

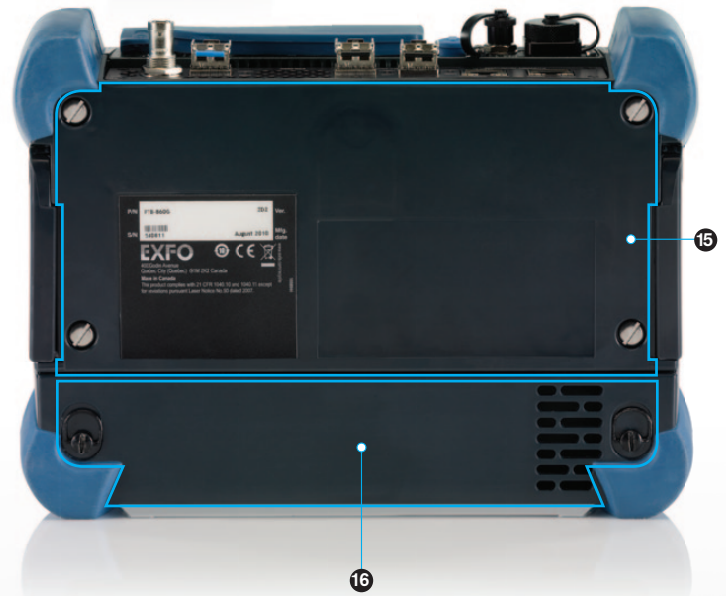
Wi-Fi connection

Display available Wi-Fi connections and save your default settings.

DESIGNED FOR EFFICIENCY



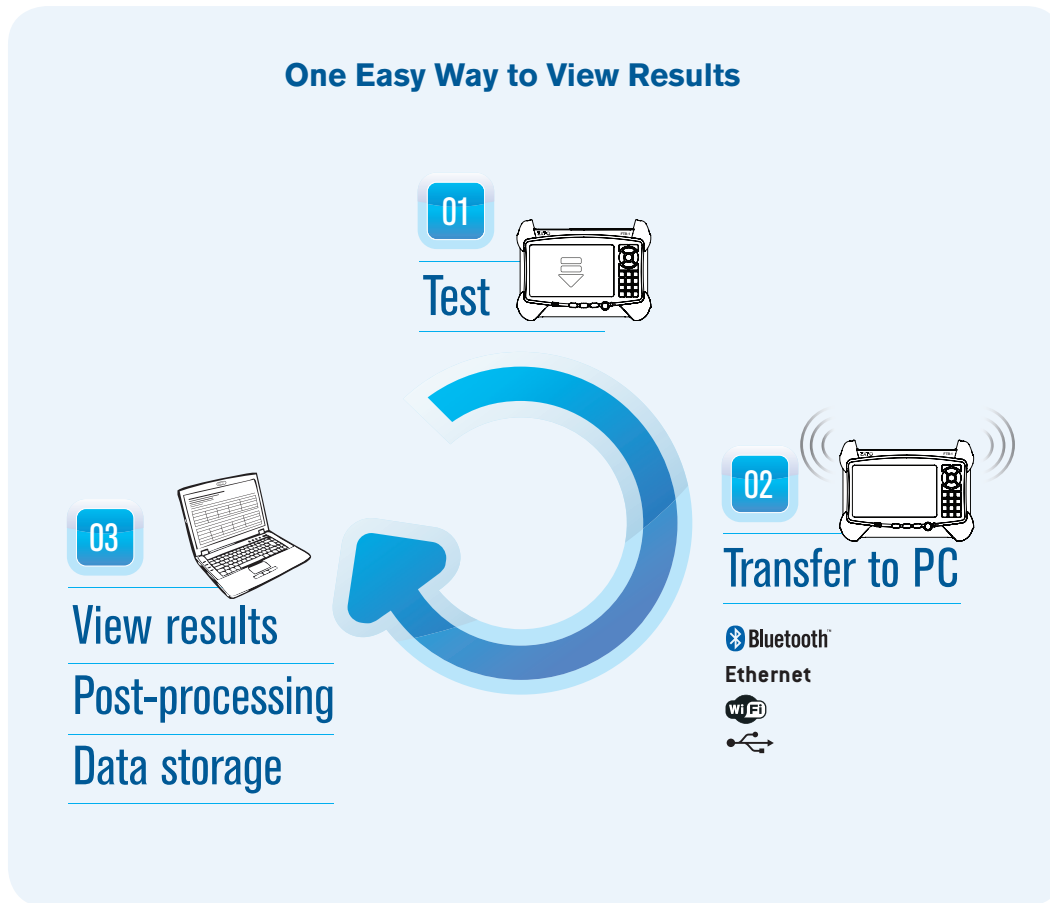
- 1 Power meter and VFL
- 2 Stylus
- 3 Two USB 2.0 ports
- 4 1 GigE port
- 5 Head set
- 6 Fiber inspection probe video port
- 7 AC adapter
- 8 Back stand
- 9 Speaker out
- 10 Brightness
- 11 Keyboard/screen capture
- 12 Switch application
- 13 Power on/off
- 14 Battery LED
- 15 Module compartment
- 16 Battery



TEST, PROCESS, VIEW AND SEND: IT'S THAT EASY

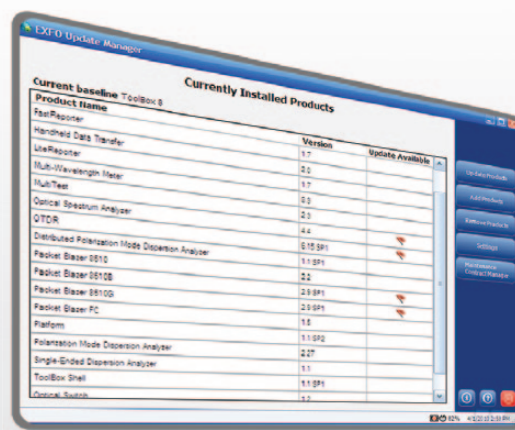
Connectivity

The FTB-1's integrated wireless communication capabilities allow you to send reports anytime, anywhere using mobile, Wi-Fi or Bluetooth networking connections.



Update Manager

Stay current with the FTB-1 Update Manager, which enables you to easily manage the applications developed for your test solution. Thanks to EXFO's feature enhancement program, it has never been easier to benefit from our latest innovation. Based on customer feedback, acute market trend analysis and compliance with the latest standards, EXFO is committed to ensuring that your product is at its best.



TECHNICAL SPECIFICATIONS

Display	Touchscreen, color, 800 x 480 TFT, 178 mm (7 in)
Interfaces	Two USB 2.0 ports RJ-45 LAN 10/100/1000 Mbit/s Fiber inspection probe connector port (video) Built-in Bluetooth and Wi-Fi (hardware option)
Storage	8 GB internal memory (flash) 16 GB internal memory (flash), optional
Batteries	Rechargeable lithium-ion batteries 8 hours of operation as per Telcordia* (Bellcore) TR-NWT-001138
Power supply	AC/DC adapter, input 100-240 VAC, 50-60 Hz, 1.6 A max, output 24 VDC, 3.75 A
Computer	Intel ATOM processor Windows Embedded Standard operating system

GENERAL SPECIFICATIONS

Size (H x W x D)	190 mm x 252 mm x 66 mm (7 1/2 in x 9 15/16 in x 2 5/8 in)
Weight (with battery)	1.5 kg (3.3 lb)
Temperature	Operating 0 °C to 50 °C (32 °F to 122 °F) Storage -40 °C to 70 °C (-40 °F to 158 °F)**
Relative humidity	0 % to 95 % non-condensing

* With optional extended-life battery.

** -20 °C to 60 °C (-4 °F to 140 °F) with the battery pack.

ACCESSORIES

FP4S	400x Fiber Inspection Probe	GP-2001	USB keyboard
FP4D	200x/400x Fiber Inspection Probe	GP-2016	10 feet RJ-45 LAN cable
GP-10-086	Rigid FTB-1 carrying case	GP-2028	Computer security cable kit
GP-10-072	Semi-rigid FTB-1 carrying case	GP-2137	USB-to-RS-232 converter
GP-302	USB mouse	GP-2138	DC car adapter/inverter
GP-1002	Headset	GP-2144	USB 16G micro-drive
GP-1008	VFL adapter (2.5 mm to 1.25 mm)	GP-2200	Module receptacle back panel

PM-1 BUILT-IN POWER METER SPECIFICATIONS^a

Calibrated wavelengths (nm)	850, 1300, 1310, 1490, 1550, 1625, 1650
Optional CWDM calibrated wavelengths (nm)	1270, 1290, 1310, 1330, 1350, 1370, 1390, 1410, 1430, 1450, 1470, 1490, 1510, 1530, 1550, 1570, 1590, 1610, 1383, 1625
Power range (dBm)	10 to -86 (InGaAs) 26 to -64 (GeX)
Uncertainty (%) ^b	±5 % ± 3 pW (InGaAs) ±5 % ± 0.4 nW (GeX)
Display resolution (dB)	
InGaAs	0.01 = max to -76 dBm 0.1 = -76 dBm to -86 dBm 1 = -86 dBm to min
GeX	0.01 = max to -54 dBm 0.1 = -50 dBm to -60 dBm 1 = -60 dBm to min
Automatic offset nulling range ^c	Max power to -63 dBm for InGaAs Max power to -40 dBm for GeX
Tone detection (Hz)	270/1000/2000

VISUAL FAULT LOCATOR (VFL) (OPTIONAL)

Laser, 650 nm ± 10 nm
CW
Typical P _{out} in 62.5/125 μm: 3 dBm (2 mW)

LASER SAFETY



21 CFR 1040.10 AND IEC 60825-1:2007
CLASS 3R WITH VFL OPTION

Notes

- At 23 °C ± 1 °C, 1550 nm and FC connector. With modules in idle mode. Battery operated.
- Up to 5 dBm.
- For ±0.05 dB, from 18 °C to 28 °C.

ORDERING INFORMATION

FTB-1-XX-XX-XX-XX-XX-XX-XX-XX

Model ■
FTB-1

Display ■
S1 = TFT active screen
S2 = Outdoor-enhanced screen

Memory ■
00 = 8 GB internal memory (flash)
XMEM = 16 GB internal memory (flash)

Battery ■
00 = Standard rechargeable lithium-ion battery
EXT = Extended-life rechargeable lithium-ion battery

Wi-Fi/Bluetooth hardware option ■
00 = Without RF components
RF = With RF capability (Wi-Fi and Bluetooth)

Power meter ■
00 = Without power meter
VFL1 = Visual fault locator only
VPM2X = VFL platform; PM; GeX detector^a
VPM2X-CWDM = VFL platform; PM; GeX detector; CWDM
wavelengths calibrated (from 1270 nm to 1610 nm)^a
VPM3 = VFL; power meter; InGaAs detector^a
VPM3-CWDM = VFL; power meter; InGaAs detector; CWDM
wavelengths calibrated (from 1270 to 1610 nm)^a

Software option
00 = Without software option
IPT = Ping traceroute software
FPSA = With fiber inspection probe analysis software
FPSAMF = ConnectorMax kit: Single-fiber analysis and reporting;
multiple-fiber connectors wizard and reporting

Probe
00 = Without probe
FP4S = Inspection probe (400x)
FP4D = Inspection probe (200x/400x)

Connector adapter
FOA-12 = Biconic
FOA-14 = NEC D4: PC, SPC, UPC
FOA-16 = SMA/905, SMA-906
FOA-22 = FC/PC, FC/SPC, FC/UPC, FC/APC
FOA-28 = DIN 47256, DIN 47256/APC
FOA-32 = ST: ST/PC, ST/SPC, ST/UPC
FOA-54 = SC: SC/PC, SC/SPC, SC/UPC, SC/APC
FOA-78 = Radial EC
FOA-96B = E-2000 E-2000/APC
FOA-98 = LC
FOA-99 = MU
WC2 = FOA-FC-ST-SC-LC

Example: FTB-1-S2-XMEM-EXT-RF-VPM2X-FOA-78-FP4S-FPSA

Note

a. Connector adapter available.

EXFO Corporate Headquarters > 400 Godin Avenue, Quebec City (Quebec) G1M 2K2 CANADA | Tel.: +1 418 683-0211 | Fax: +1 418 683-2170 | info@EXFO.com

Toll-free: +1 800 663-3936 (USA and Canada) | www.EXFO.com

EXFO America	3400 Waterview Parkway, Suite 100	Richardson, TX 75080 USA	Tel.: +1 972 761-9271	Fax: +1 972 761-9067
EXFO Asia	100 Beach Road, #22-01/03 Shaw Tower	SINGAPORE 189702	Tel.: +65 6333 8241	Fax: +65 6333 8242
EXFO China	36 North, 3 rd Ring Road East, Dongcheng District Room 1207, Tower C, Global Trade Center	Beijing 100013 P. R. CHINA	Tel.: + 86 10 5825 7755	Fax: +86 10 5825 7722
EXFO Europe	Omega Enterprise Park, Electron Way	Chandlers Ford, Hampshire S053 4SE ENGLAND	Tel.: +44 23 8024 6810	Fax: +44 23 8024 6801
EXFO NetHawk	Elektronikkatie 2	FI-90590 Oulu, FINLAND	Tel.: +358 (0)403 010 300	Fax: +358 (0)8 564 5203
EXFO Service Assurance	270 Billerica Road	Chelmsford, MA 01824 USA	Tel.: +1 978 367-5600	Fax: +1 978 367-5700

EXFO is certified ISO 9001 and attests to the quality of these products. This device complies with Part 15 of the FCC Rules. Operation is subject to the following two conditions: (1) this device may not cause harmful interference, and (2) this device must accept any interference received, including interference that may cause undesired operation. EXFO has made every effort to ensure that the information contained in this specification sheet is accurate. However, we accept no responsibility for any errors or omissions, and we reserve the right to modify design, characteristics and products at any time without obligation. Units of measurement in this document conform to SI standards and practices. In addition, all of EXFO's manufactured products are compliant with the European Union's WEEE directive. For more information, please visit www.EXFO.com/recycle. Contact EXFO for prices and availability or to obtain the phone number of your local EXFO distributor.

For the most recent version of this spec sheet, please go to the EXFO website at www.EXFO.com/specs.

In case of discrepancy, the Web version takes precedence over any printed literature.